



www.jeffreygross.co.uk

CARDIFF

VALE

CAERPHILLY

BRISTOL



I loved all the things the flat came with, like the parking, access to the beach and green places, the gym, sauna and pool. I loved being able to smell the sea from my front door, and feeling so detached from busy towns, yet still having great access to Sully, Barry, Penarth and even Cardiff.

Comments by Mr Paul Davies



Property Specialist
Mr Paul Davies
Property Management Co-ordinator
paul.davies@jeffreycross.co.uk



Hayes Point is a wonderful development on the fringe of the delightful village of Sully. Situated in 35 acres of grounds with excellent woodland walks or along the Heritage coastline. Facilities include 24 hour concierge, indoor swimming pool & gym plus in the summer months you can enjoy watching the Sully Centurions play cricket or even grab a game of tennis in one on the courts.

Comments by the Homeowner





Lounge Kitchen 13'11" x 11'8" (4.24m x 3.56m)

Enter via solid oak door into the lounge open plan to the kitchen, oak flooring, window to front, TV point, telephone point, kitchen fitted with a matching range of contemporary white 'Hi Gloss' base and eye level units with under lighting and solid granite worktops incorporating a 1 & half bowl stainless steel sink unit with mixer tap, integrated appliances include a fridge, freezer, dishwasher, washing machine, built-in fan assisted oven, four ring ceramic hob with a cooker hood over.

Hall

Access to the bedroom and bathroom, oak flooring, generous airing cupboard housing the hot water cylinder.

Bathroom

Fitted with a three piece modern white suite comprising a deep panelled bath, wall mounted wash hand basin and close coupled WC with concealed cistern, tiled surround, heated chrome towel rail, extractor fan, wall mounted mirrored cabinet, shaver point, ceramic tiled flooring.

Bedroom 13'11" x 10'4" (4.24m x 3.15m)

Generous double bedroom, window to rear plus French doors leading onto an allocated paved patio in turn leading onto a communal lawn, 2 built in double wardrobes, TV point, telephone point.

Outside

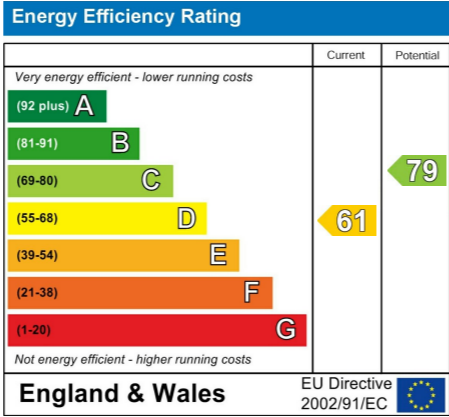
Set in about 35 acres of grounds adjacent to a private coastline,

boasting spectacular views, in perfect harmony with nature become enchanted by the four seasons and stunning sunsets from the glass balcony. Its so easy to become captivated with the abundance of wildlife set in rural seclusion & security. Electric barrier on entry to the grounds, plus numerous visitor spaces available and an allocated parking space.

Information

With a 999 year lease from 1st January 2006, there with 979 years remaining, with a ground rent of £75.00 half yearly. service charge currently £1,612.14 every 6 months (including water rates & buildings insurance plus full use of the facilities at Hayes Point) Council Band D - £2,068.66 (2025-2026)


PLEASE NOTE: PHOTOGRAPHS DISPLAYED ARE PRE RENTAL





Courtlands


, Sully, CF64 5QG

£100,000

 1 Bedroom(s)

 1 Bathroom(s)

 419.00 sq ft

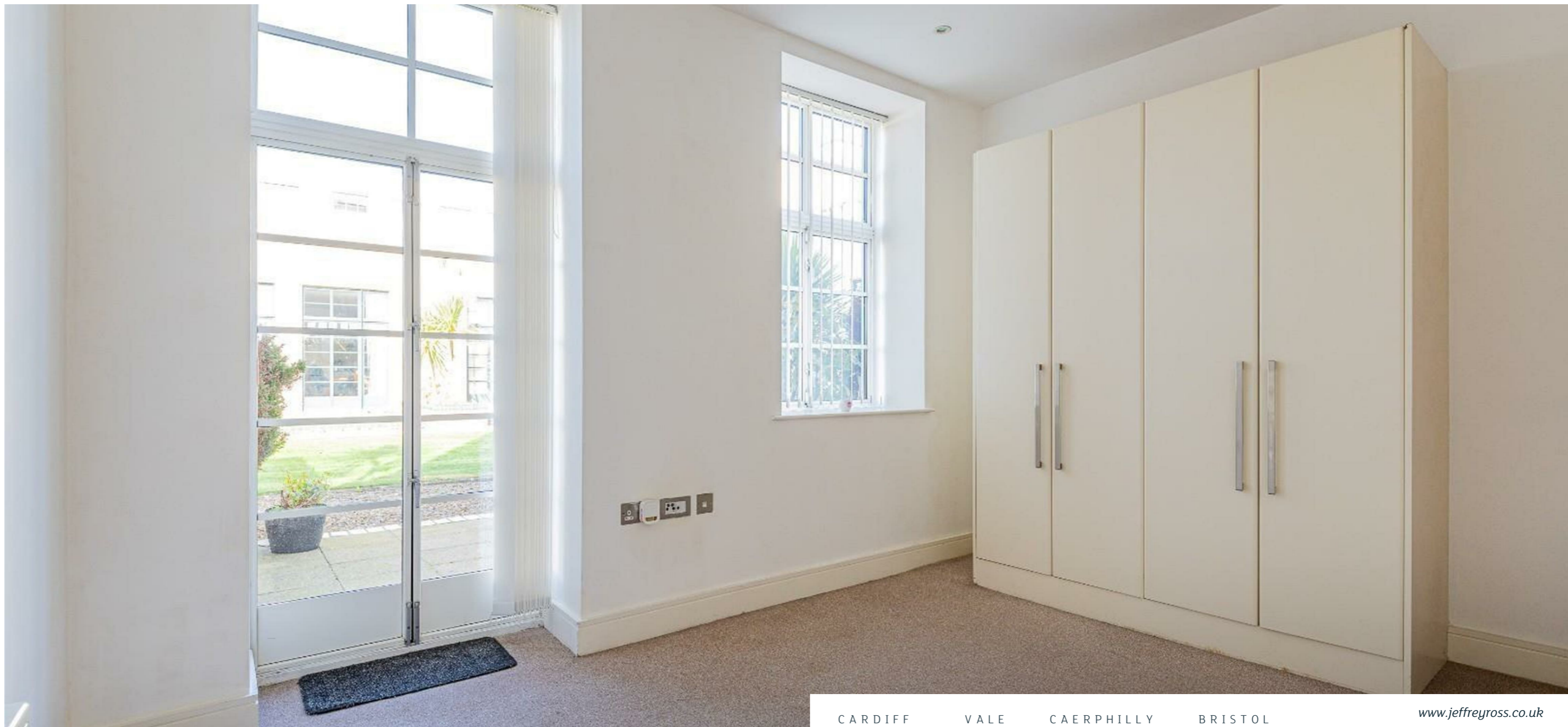


Contact our

Penarth Branch

02920415161

Located in the highly popular development at Hayes Point on the fringe of the delightful village of Sully. Superb onsite facilities at Hayes Point include remote control barrier entry, 24 hour concierge plus indoor fitness suite to include a heated swimming pool, fully equipped gymnasium plus a conference room. You will find this apartment on the ground floor with its own entrance and comprising a spacious lounge open plan to a kitchen - solid granite worktops and integrated fridge, freezer, washing machine, dishwasher plus built in oven, hob & hood and built in microwave oven, inner hall, stylishly appointed bathroom - shower plus generous double bedroom - 2 built in double bedrooms plus French doors that lead onto an allocated patio area in turn overlooking a central communal lawn. Complimented with double glazing and electric heating. Hayes Point is set in 35 acres with mature woodland plus private access onto the beach with its superb walks along the Heritage coastline. Within the grounds, a cricket pitch with club house and tennis courts. Viewing recommended to appreciate the facilities.



CARDIFF

VALE

CAERPHILLY

BRISTOL

www.jeffreygross.co.uk